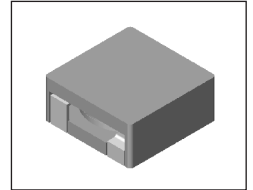


# SMT Power Inductor

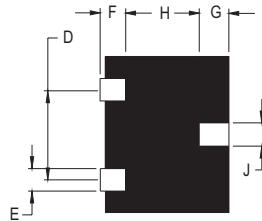
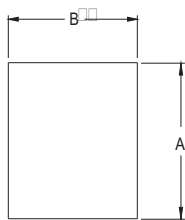
## HMP1350 Type

### Features

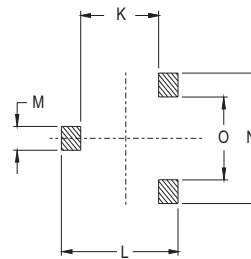
- RoHS compliant.
- Low profile, SMD type.
- High current.
- Magnetic shielded.
- High energy storage and low DCR.
- Provided with embossed carrier tape packing.
- Ideal for power source circuits, DC-DC converter, DC-AC inverters inductor applications.
- In addition to the standard versions shown here, customized inductors are available to meet your exact requirements.



### Mechanical Dimension :



### RECOMMENDED PAD PATTERNS



UNIT : mm/inch  
 D = 7.80 / 0.307  
 F = 2.50 / 0.098  
 G = 2.50 / 0.098  
 H = 8.00 / 0.315  
 J = 3.20 / 0.126  
 K = 7.00 / 0.276  
 L = 14.00 / 0.551  
 M = 3.70 / 0.146

UNIT : mm/inch

PART NO.	A	B	C (MAX)	E	N	O
HMP1350	12.70 ± 0.5 / 0.50 ± 0.02	13.00 ± 0.5 / 0.512 ± 0.02	5.00 / 0.197	2.40 / 0.094	11.20 / 0.441	4.40 / 0.173
HMP1350S	12.70 ± 0.5 / 0.50 ± 0.02	13.00 ± 0.5 / 0.512 ± 0.02	5.00 / 0.197	2.00 / 0.079	10.80 / 0.425	4.80 / 0.189

### Electrical Characteristics : At 25°C: 100KHz, 1V

PART NO.	$L^1$ ( $\mu$ H)	$L_i$ ( $\mu$ H) MIN	DCR (m $\Omega$ ) MAX	$I_{sat}^2$ (Adc)	$I_{rms}^3$ (Adc)
HMP1350M-0R5	0.5	0.40	1.3	40.0	30.0
HMP1350-0R6	0.6	0.48	1.3	30.0	30.0
HMP1350-0R7	0.7	0.56	1.3	30.0	30.0
HMP1350-1R0	1.0	0.80	2.1	30.0	26.0
HMP1350-1R5	1.5	1.20	2.1	20.0	26.0
HMP1350-2R0	2.0	1.60	3.5	20.0	17.0
HMP1350M-2R2	2.2	1.76	4.3	18.0	15.8
HMP1350-3R3LD	3.3	2.30	4.3	14.0	15.8
HMP1350BM-4R7	4.7	3.76	6.3	13.5	12.5
HMP1350-150	15.0	12.00	26.0	5.4	7.5
HMP1350S-R85	0.85	0.68	1.3	20.0	30.0

1. Tolerance of inductance is  $\pm 20\%$ .
2.  $I_{sat}$  is the DC current which cause the inductance drop to  $L_i$ .
3.  $I_{rms}$  is the DC current which cause the surface temperature of the part increase less than 45°C.
4. Operating temperature : -20°C to 105°C ( including self-temperature rise ).



DELTA ELECTRONICS, INC.

(TAOYUAN PLANT CPBG) 252, SAN YING ROAD, KUEISAN INDUSTRIAL ZONE, TAOYUAN SHIEN, 333, TAIWAN, R.O.C.  
 TEL: 886-3-3591968; FAX: 886-3-3591991  
<http://www.deltaww.com>